

Rigid gas permeable contact lenses

appenzeller
kontaktlinsen®
passt.

i-MAP

For fitting with irregular corneae



Fits when nothing else will.

info@appenzeller-kontaktlinsen.ch
www.appenzeller-kontaktlinsen.ch



Little bowls of plastic...

passt.

It was Mr Feinbloom. The optician was the first one to use PMMA to manufacture contact lenses. That was in the 1930's. A big window to the world opened to millions of people since, thanks to those little bowls of plastic.

We put a great deal of effort into Research & Development to ensure that our contact lenses always meet the latest technological possibilities.

Our Professional Services team advises you competently, personally and patiently. They will answer every question and make sure you get the right contact lens in any case.

i-SOFT



3-monthly soft contact lenses
My yearly supply of soft contact lenses.
Per eye.

Personnelle



Unifocale – Multifocale – Style de vie numérique
My contact lens. As unique as my fingerprint.

Excellent AS Excellent MK



Single vision – Multifocal – Bifocal
Classic, practical, excellent:
You can count on this contact lens.

i-MAP AS



Single vision – Multifocal – Bifocal
High-tech for my everyday life:
Coping with any situation.

Content

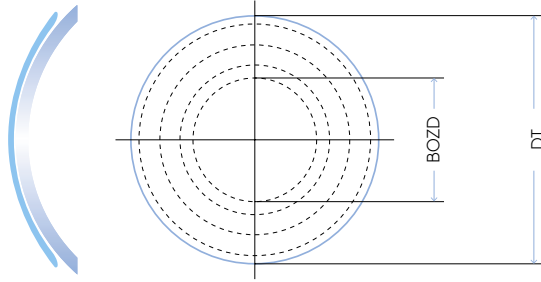
- 4 i-MAP
Individual multi-curve contact lens
- 5 i-MAP Progress-F
Individual multi-curve multifocal contact lens
- 6 i-MAP Progress-N
Individual multi-curve multifocal contact lens
- 7 Case example
Post Lasik
- 8 Comfort and safety
Our recommendation for the car regime of
rigid gas permeable contact lenses
- 10 Material list
Rigid gas permeable contact lenses



passt.

i-MAP

Individual,
multi-curve contact lens



i-MAP:

→ Indications

- Keratoconus
- Keratoglobus
- Irregular cornea
- Post keratoplasty
- Post Lasik
- After mechanical injury to the cornea

→ Front surface design

Spherical or toric

→ Back surface design

- Spherical or toric, multi-curve
- The number of curves, zone widths and corresponding peripheral radii can be freely selected
- Design can be selected prolong, oblong or reverse depending on the indication
- Comfort bevel ensures a high wearing comfort and an optimal tear film exchange

→ Design versions

Design	Description
VP	Front prism ballast
VPT	Toric Front prism ballast
PT (VP/VPT)	Toric periphery (Front prism ballast/ Toric Front prism ballast)
RT (VP)	Back toric (Front prism ballast)
BT (VP)	Bi-toric (Front prism ballast)
QSD (VP/VPT)	QuadrantSpecificDesign
QSD RT (VP)	
QSD BT (VP)	

→ Product range

Everything that is technically possible. Ask us - we are open for your individual wishes.

→ Materials

See list on page 10.

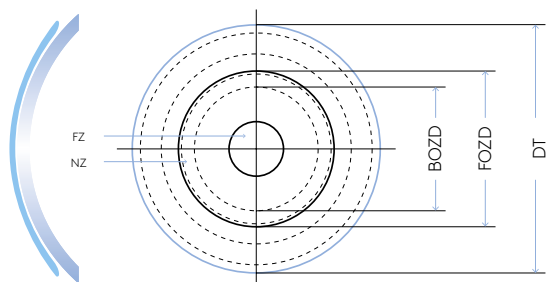
→ Fitting recommendations

When fitting irregular corneae, we recommend starting the process with simple, standardised contact lens designs.

If the need for a freely definable, multi-curve contact lens design becomes apparent during the process of the fitting, conversion is possible at any time without a problem by Appenzeller Kontaktlinsen.

In order to be able to provide you optimal support during the fitting process, it is best to send us the corneal topography in advance. Then we will send you a trial lens - according to the indication - and will be happy to give you advice for the procedure during the fitting.

If you have the option of photo or video documentation, simply send us the images of the trial lenses - we will then be able to calculate an individual i-MAP for you.



i-MAP Progress-F

→ Selecting the zone size

Dominant eye distance	Central zone = 4.5 mm
Non-dominant eye	Central zone = 4.3 mm

→ Design options

Design	Description
VP	Front prism ballast
VPT	Toric front prism ballast
RT (VP)	Back toric (Front prism ballast)
BT (VP)	Bi-toric (Front prism ballast)

→ Product range

Everything that is technically possible. Ask us – we are open for your individual wishes.

→ Materials

See list on page 10.

→ Fitting recommendations

When fitting irregular corneae, we recommend starting the process with simple, standardised contact lens designs.

If the need for a freely definable, multi-curve contact lens design becomes apparent during the process of the fitting, conversion is possible at any time without a problem by Appenzeller Kontaktlinsen.

In order to be able to provide you optimal support during the fitting process, it is best to send us the corneal topography in advance. Then we will send you a trial lens – according to the indication – and will be happy to give you advice for the procedure during the fitting.

If you have the option of photo or video documentation, simply send us the images of the trial lenses – we will then be able to calculate an individual i-MAP for you.

→ Indications

- First choice for the correction of presbyopia with multifocal, rigid gas permeable contact lenses
- Keratoconus
- Keratoglobus
- Irregular cornea
- Post keratoplasty
- Post Lasik
- After mechanical injury to the cornea

→ Front surface design

- Correction according to the simultaneous principle
- Multifocal, concentric structure, centre distance
- The central zone contains the distance and intermediate correction at a ratio of 75%:25%
- The zone ratio can be freely selected
- Multifocal, spherical or toric
- Centre distance

→ Back surface design

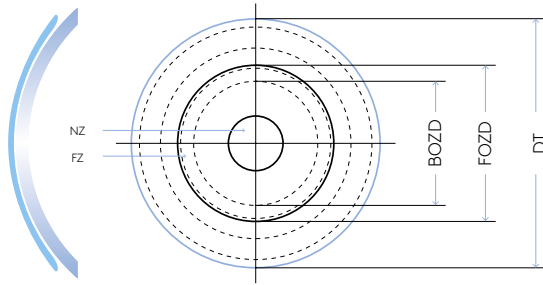
- Spherical or toric, multi-curve
- The number of curves, zone widths and corresponding peripheral radii can be freely selected
- Design can be selected prolong, oblong or reverse depending on the indication
- Comfort bevel ensures a high wearing comfort and an optimal tear film exchange



passt.

i-MAP Progress-N

Individual multi-curve,
multifocal contact lens



i-MAP Progress-N

→ Indications

- Presbyopia
- Keratoconus
- Keratoglobus
- Irregular cornea
- Post keratoplasty
- Post Lasik
- After mechanical injury to the cornea

→ Front surface design

- Correction according to the simultaneous principle
- Multifocal, concentric structure, centre near
- The central zone contains the near and intermediate correction at a ratio of 75%:25%
- The zone ratio can be freely selected
- Multifocal, spherical or toric
- Centre near

→ Back surface design

- Spherical or toric, multi-curve
- The number of curves, zone widths and corresponding peripheral radii can be freely selected
- Design can be selected prolong, oblong or reverse depending on the indication
- Comfort bevel ensures a high wearing comfort and an optimal tear film exchange.

→ Selecting the zone size

Dominant eye distance	Central zone = 3.2 mm
Non-dominant eye	Central zone = 3.4 mm

→ Design options

Design	Description
VP	Front prism ballast
VPT	Toric Front prism ballast
RT (VP)	Back toric (Front prism ballast)
BT (VP)	Bi-toric (Front prism ballast)

→ Product range

Everything that is technically possible. Ask us - we are open for your individual wishes.

→ Materials

See list on page 10.

→ Fitting recommendations

When fitting irregular corneae, we recommend starting the process with simple, standardised contact lens designs.

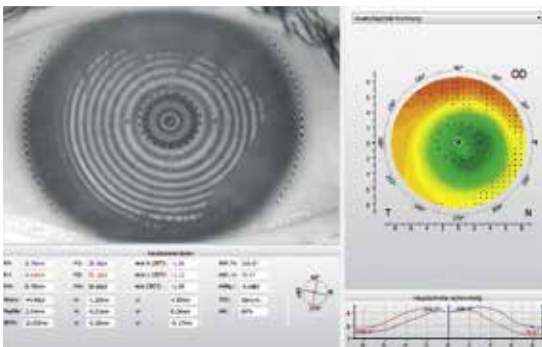
If the need for a freely definable, multi-curve contact lens design becomes apparent during the process of the fitting, conversion is possible at any time without a problem by Appenzeller Kontaktlinsen.

In order to be able to provide you optimal support during the fitting process, it is best to send us the corneal topography in advance. Then we will send you a trial lens - according to the indication - and will be happy to give you advice for the procedure during the fitting.

If you have the option of photo or video documentation, simply send us the images of the trial lenses - we will then be able to calculate an individual i-MAP for you.

Case example

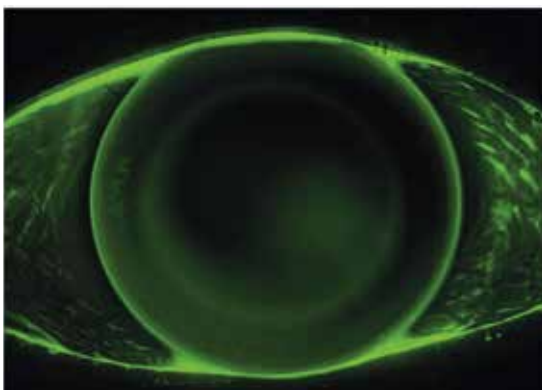
→ Post Lasik



Topography after Lasik.

→ Parameter

BOZD	7,00mm	BOZR	8,70mm
Ø1	8,00mm	R1	7,60mm
Ø2	8,90mm	R2	8,10mm
Ø3	9,80mm	R3	8,60mm
DT	10,60mm	R4/Bevel	11,25mm



Ideal fluorescein pattern of an i-MAP contact lens with reverse back surface design after Lasik.



passt.

COMFORT AND SAFETY

Our recommendation for the care regime of rigid gas permeable contact lenses:

Individual products or sets.
Compiled to your wishes.

Contact lenses are not just a product. Contact lenses are a process that begins with your consultation. And continues after a successful fitting. Because contact lenses need to be inserted and removed. And because they need to be cleaned and stored. That's why we don't just supply you with contact lenses made to order, but also with know-how made to order. This includes our Professional Service, which is there for you in word and action. It also includes care products and accessories that give your patients the greatest possible feeling of comfort, health and safety.

Clean and rinse, disinfect and store : This is the sequence. And accordingly, we offer you products that are precisely matched to each other in exactly the combination you want. Put together nicely as a set wrapped in thin transparent film, which can be removed without scissors.

Combination example:

- 1x Cleaner plus 1x Saline plus 1x Peroxid plus 1x Enzyme
- 1x Cleaner plus 1x Saline plus 1x All-in-One RGP

See also brochure Appenzeller Kontaktlinsen Comfort and safety

1. Cleaning
Daily

Appenzeller Kontaktlinsen® Cleaner

Alcohol-based cleaner

For daily care of rigid gas-permeable contact lenses (also GP-plasma-coated) and soft contact lenses.

2. Rinsing
Daily

Appenzeller Kontaktlinsen® Saline

Saline as inserting solution

For all types of contact lenses - except scleral lenses - and for rinsing of soft and rigid gas-permeable contact lenses. Both after cleaning the lens and before putting the lens on the eye.



3. Disinfection and storage Daily

Appenzeller Kontaktlinsen® Peroxyd

Disinfection and neutralisation in 1 hour

The disinfection and neutralisation can be carried out very simply, quickly and a 100% efficiently. Appenzeller Kontaktlinsen make it possible with this peroxide system. For conventional soft lenses, disposable lenses and rigid gas permeable lenses (RGP)

Appenzeller Kontaktlinsen® All-in-One Soft

Disinfectant

For all those who do not opt for the peroxide system and its unusually rapid effect (see column on the left): All-in-One Soft – the multipurpose solution with sodium hyaluronate for longer effect, longer wearing time, longer feeling of comfort.

4. Protein removal Once a week

Appenzeller Kontaktlinsen® Enzyme

Intensive cleaning

Protein deposits build up on the lens every day. In addition to the daily neutralisation of the lenses, a weekly protein removal removing is needed when using the peroxide system.





MATERIAL LIST

passt.

Rigid gas permeable contact lenses

+++ Very good
 ++ Good
 + Sufficient
 - Not recommendable

	Optimum Classic	Optimum Comfort	Optimum Extra	Optimum Extreme	Optimum Infinite	Boston IV	Boston ES	Boston Equalens	Bosteon EO	Boaton XO	Visaflex	PMMA	TLM
Composition	MMA + SI + F	MMA + SI + F	MMA + SI + F	MMA + SI + F	MMA + SI + F	MMA + SI	MMA + SI + F	MMA + SI + F	MMA + SI + F	MMA + SI + F	MMA + SI	MMA	MMA + SI + F
Dk-Value*	26	65	100	125	180	19	18	47	58	100	18	0-0.5	
Refractive index	1.450	1.441	1.431	1.432	1.438	1.469	1.443	1.438	1.429	1.415	1.492	1.490	1.45
Specific gravity (g/cm ³)	1.190	1.178	1.160	1.150	1.200	1.100	1.220	1.190	1.230	1.270	1.120	1.180	
Wetting angle (°)	12***	6***	3***	6***		17**	52**	30**	49**	49**	25**	27**	
Surface hardness (Shore)	83	79	75	77	81	84	85	82	83	81	86	90	
UV- filter	Yes	Yes	Yes	Yes	Yes	No	Yes	Yes	Yes	Yes	Yes	No	
Tints	Blue	Aqua Blue Green Brown	White Aqua Blue Green	Aqua Blue Green Red Violet	White Aqua Blue	Blue	Aqua Blue Green	Blue	Aqua Blue Green	Aqua Blue Green Red Violet	Blue Green	White Grey	Red Violet
Resistance to tear film containing proteins	++	++	++	++	++	+	++	++	++	+++	+	+++	++
Resistance to tear film containing lipids	++	++	++	++	++	+++	++	++	+	+	+++	+++	+
Breaking resistance	+++	++	+	+	+	+++	+++	++	+++	++	+++	+++	++
Parameter stability	++	+	+	+	+	+++	+++	++	++	++	+++	+++	++
Overnight wearing (Ortho-K)	-	-	+	+	+	-	-	-	-	+	-	-	-

* ISO 9913-1, Unit X10⁻¹¹ (cm²/sec) [mLO₂/(ml x mmHg)] ** Bubble cap method *** Manufacturer indications

■ TLM is our trial lens material and cannot be sold

... big window to the world.

appenzeller
kontaktlinsen®
passt.

i-NIGHT



Orthokeratology at the highest level
Wear overnight – see during the day:
Without spectacles, without contact lenses.

Personnelle-KK
Excellent-KK



Keratoconus contact lenses
High grade of keratoconus,
high demand: fits like a mould.

i-MAP



For fitting with irregular corneae
Fits when nothing else will.

i-MATRIX



Scleral lenses
Corneal damage, keratoconus,
keratoplasty? Still fits.

*pro*ASSIST



Professional support with progressive myopia
Smart contact lenses instead of thick
spectacle lenses.



passt.

Appenzeller Kontaktlinsen AG
Hauptstrasse 22
CH-9042 Speicher AR
Telephone +41 71 344 20 00

Appenzeller Kontaktlinsen AG
Kemptener Strasse 8
D-88131 Lindau
Telephone +49 69 332 962 31

Appenzeller Kontaktlinsen AG
Postfach 29
A-6973 Höchst
Telephone +43 72 088 16 97

info@appenzeller-kontaktlinsen.ch www.appenzeller-kontaktlinsen.ch

Rigid gas permeable
contact lenses

i-MAP

10 Reasons Why to choose Appenzeller Kontaktlinsen

→ Fitting success

We do everything we can to understand your wishes and ideas. So that your fitting is a complete success – for you and your patients.

→ Open ears

Our Professional Services team advises you competently, personally and patiently. They will answer every question and make sure you get the right contact lens in any case.

→ Price advantage

We offer you favourable terms of payment. You can get extra benefits if you pay in advance. We will happily let you know about the current conditions on request.

→ Technological advantage

We put a great deal of effort into Research & Development to ensure that our contact lenses always meet the latest technological possibilities.

→ Custom made

Each contact lens is individually made to order for you, so that it matches your specifications a 100%.

→ Guarantee scheme

We take responsibility for our work so you can rely on us and our contact lenses with guarantee. Guarantee period:

- i-SOFT 3-monthly lenses: 1 month
- 6-monthly lenses: 2 months
- 12-monthly lenses: 3 months

Broken lens: Return us the lens within the guarantee period and we will replace it. We will credit it on your next invoice accordingly. The date on the delivery note is decisive for the guarantee period.

→ Swiss made

We demand the highest standards of the manufacturing quality of our contact lenses, so that they match your equally high expectations of Swiss made.

→ Right to exchange

We send out our contact lenses with or without the right to exchange, so you can make the best choice for your needs. The option "with right to exchange" gives you financial security: you can order a different lens later. If you do so within the exchange period, you pay only a small excess. The date on the delivery note is decisive for the deadline.

- Soft contact lenses:
 - i-SOFT 3-monthly lenses: 1 month
 - 6-monthly lenses: 2 months
 - 12-monthly lenses: 3 months
- Rigid gas-permeable lenses: 3 months

→ Long-term vision

We strive for a lasting business relationship with you, so that you can also count on us in the long term.

→ Reproducibility

We help you keeping your patients satisfied by ensuring that you receive the same lens as before with your repeat order.



As a company we care for nature, and we have a packaging license from "Green Point".

© Appenzeller Kontaktlinsen AG | Subject to change | 2021-04
All trademarks are the property of Appenzeller Kontaktlinsen.